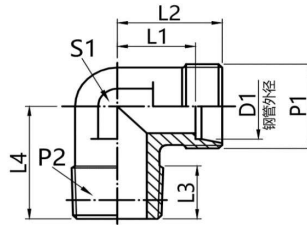


WE-RK

弯通接头

Elbow connector



- 符合ISO8434-1, 24°卡套连接作用
- 常规供货碳钢/表面镀锌, 不锈钢

- Comply with ISO8434-1, 24° ferrule connection
- Generally supplied carbon steel/galvanized surface, stainless steel

钢管外径		尺寸				六角	螺纹			重量	型号	产品编码
D1	L1	L2	L3	L4	S1	P1	P2	kg/100	Type	Product Code		
6	12	19	8	20	12	M12x1.5	R1/8K	3.0	WE06LR1/8K	BF2050602		
6	14	21	12	26	12	M12x1.5	R1/4K	4.7	WE06LR1/4K	BF2050604		
8	14	21	12	26	12	M14x1.5	R1/4K	4.6	WE08LR1/4K	BF2050804		
10	15	22	12	27	14	M16x1.5	R1/4K	3.1	WE10LR1/4K	BF2051004		
10	15	22	12	27	14	M16x1.5	R3/8K	8.7	WE10LR3/8K	BF2051006		
12	17	24	12	28	17	M18x1.5	R1/4K	8.0	WE12LR1/4K	BF2051204		
12	17	24	12	28	17	M18x1.5	R3/8K	8.8	WE12LR3/8K	BF2051206		
15	21	28	14	34	19	M22x1.5	R1/2K	9.4	WE15LR1/2K	BF2051508		
18	23.5	31	14	36	24	M26x1.5	R1/2K	14.1	WE18LR1/2K	BF2051808		
6	16	23	12	26	12	M14x1.5	R1/4K	5.6	WE06SR1/4K	BF2550604		
8	17	24	12	27	14	M16x1.5	R1/4K	7.3	WE08SR1/4K	BF2550804		
10	17.5	25	12	28	17	M18x1.5	R3/8K	10.4	WE10SR3/8K	BF2551006		
12	21.5	29	12	28	17	M20x1.5	R3/8K	12.6	WE12SR3/8K	BF2551206		
14	22	30	14	32	19	M22x1.5	1/2K	10.1	WE14SR1/2K	BF2551408		
16	24.5	33	14	32	24	M24x1.5	R1/2K	15.0	WE16SR1/2K	BF2551608		