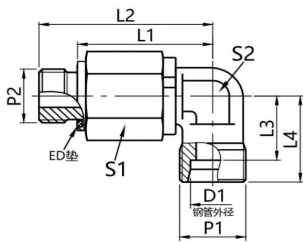


DG 103 弯通滚珠轴承旋转接头

Bent-through ball bearing swivel connector

- 符合ISO8434-1, 24°卡套连接作用
- 常规供货碳钢/表面镀锌, 不锈钢
- Comply with ISO8434-1, 24° ferrule connection
- Generally supplied carbon steel/galvanized surface, stainless steel

| 钢管外径 | | 尺寸 | | | | 六角 | | 螺纹 | 重量 | 型号 | 产品编码 |
|------|------|-------|------|----|----|----|---------|--------|-----------|--------------|------|
| D1 | L1 | L2 | L3 | L4 | S1 | S2 | P1 | kg/100 | Type | Product Code | |
| 6 | 59 | 51.5 | 16 | 23 | 22 | 17 | M14x1.5 | 13.4 | DG103/06S | RU1350606 | |
| 8 | 59 | 51.5 | 17 | 24 | 22 | 17 | M16x1.5 | 14.1 | DG103/08S | RU1350808 | |
| 12 | 72 | 63 | 21.5 | 29 | 30 | 22 | M20x1.5 | 29.6 | DG103/12S | RU1351212 | |
| 16 | 73 | 63 | 24.5 | 33 | 30 | 22 | M24x1.5 | 29.8 | DG103/16S | RU1351616 | |
| 20 | 94.5 | 83 | 26.5 | 37 | 41 | 36 | M30x2 | 77.2 | DG103/20S | RU1352020 | |
| 25 | 95 | 83 | 30 | 42 | 41 | 36 | M36x2 | 80.3 | DG103/25S | RU1352525 | |
| 30 | 116 | 102.5 | 35.5 | 49 | 60 | 50 | M42x2 | 172.2 | DG103/30S | RU1353030 | |
| 38 | 117 | 102.5 | 41 | 57 | 60 | 50 | M52x2 | 193.1 | DG103/38S | RU1353838 | |



DG 104 弯通滚珠轴承旋转接头

Elbow ball bearing swivel connector

- 符合ISO8434-1, 24°卡套连接作用
- 常规供货碳钢/表面镀锌, 不锈钢
- 可提供氟橡胶密封圈
- Complies with ISO8434-1, 24° ferrule connection
- Commonly available carbon steel/galvanized surface, stainless steel
- Fluororubber sealing ring available

| 钢管外径 | | 尺寸 | | | | 六角 | | 螺纹 | | 重量 | 型号 | 产品编码 |
|------|------|-------|------|----|----|----|---------|---------|--------|------------|--------------|------|
| D1 | L1 | L2 | L3 | L4 | S1 | S2 | P1 | P2 | kg/100 | Type | Product Code | |
| 6 | 39.5 | 51.5 | 16 | 23 | 22 | 17 | M14x1.5 | G1/4A | 13.1 | DG104/06SR | RU1470604 | |
| 8 | 39.5 | 51.5 | 17 | 24 | 22 | 17 | M16x1.5 | G1/4A | 13.5 | DG104/08SR | RU1470804 | |
| 12 | 51 | 63 | 21.5 | 29 | 30 | 22 | M20x1.5 | G3/8A | 28.4 | DG104/12SR | RU1471206 | |
| 16 | 49 | 63 | 24.5 | 33 | 30 | 22 | M24x1.5 | G1/2A | 28.4 | DG104/16SR | RU1471608 | |
| 20 | 67 | 83 | 26.5 | 37 | 41 | 36 | M30x2 | G3/4A | 75.2 | DG104/20SR | RU1472012 | |
| 25 | 65 | 83 | 30 | 42 | 41 | 36 | M36x2 | G1A | 78.9 | DG104/25SR | RU1472516 | |
| 30 | 82.5 | 102.5 | 35.5 | 49 | 60 | 50 | M42x2 | G1 1/4A | 171.3 | DG104/30SR | RU1473020 | |
| 38 | 80.5 | 102.5 | 41 | 57 | 60 | 50 | M52x2 | G1 1/2A | 191.5 | DG104/38SR | RU1473824 | |
| 6 | 39.5 | 51.5 | 16 | 23 | 22 | 17 | M14x1.5 | M14x1.5 | 13.2 | DG104/06SM | RU1460614 | |
| 8 | 39.5 | 51.5 | 17 | 24 | 22 | 17 | M16x1.5 | M14x1.5 | 13.6 | DG104/08SM | RU1460814 | |
| 12 | 51 | 63 | 21.5 | 29 | 30 | 22 | M20x1.5 | M18x1.5 | 28.6 | DG104/12SM | RU1461218 | |
| 16 | 49 | 63 | 24.5 | 33 | 30 | 22 | M24x1.5 | M22x1.5 | 28.7 | DG104/16SM | RU1461622 | |
| 20 | 67 | 83 | 26.5 | 37 | 41 | 36 | M30x2 | M27x2 | 75.2 | DG104/20SM | RU1462027 | |
| 25 | 65 | 83 | 30 | 42 | 41 | 36 | M36x2 | M33x2 | 78.8 | DG104/25SM | RU1462533 | |
| 30 | 82.5 | 102.5 | 35.5 | 49 | 60 | 50 | M42x2 | M42x2 | 171.7 | DG104/30SM | RU1463042 | |
| 38 | 80.5 | 102.5 | 41 | 57 | 60 | 50 | M52x2 | M48x2 | 191.3 | DG104/38SM | RU1463848 | |