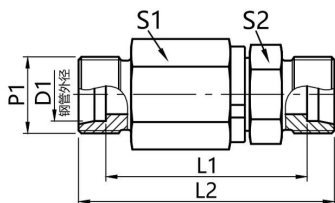


DG 101

直通球轴承旋转接头

Through ball bearing swivel connector



- 符合ISO8434-1, 24°卡套连接作用
- 常规供货碳钢/表面镀锌, 不锈钢

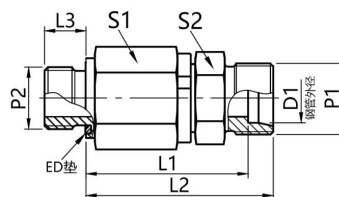
- Comply with ISO8434-1, 24° ferrule connection
- Generally supplied carbon steel/galvanized surface, stainless steel

钢管外径	尺寸		六角		螺纹	重量	型号	产品编码
D1	L1	L2	S1	S2	P1	kg/100	Type	Product Code
6	47	61	22	17	M14x1.5	11.3	DG101/06S	RU1150606
8	47	61	22	17	M16x1.5	11.8	DG101/08S	RU1150808
12	57	72	30	24	M20x1.5	25.8	DG101/12S	RU1151212
16	57	74	30	27	M24x1.5	26.4	DG101/16S	RU1151616
20	71	92	41	36	M30x2	57.8	DG101/20S	RU1152020
25	72	96	41	41	M36x2	65.2	DG101/25S	RU1152525
30	82	109	60	46	M42x2	132.1	DG101/30S	RU1153030
38	82	114	60	55	M52x2	150.9	DG101/38S	RU1153838

DG 102

端直通滚珠轴承旋转接头

End Through Ball Bearing Swivel connector



- 符合ISO8434-1, 24°卡套连接作用
- 常规供货碳钢/表面镀锌, 不锈钢
- 可提供氟橡胶密封圈

- Complies with ISO8434-1, 24° ferrule connection
- Commonly available carbon steel/galvanized surface, stainless steel
- Fluororubber sealing ring available

钢管外径	尺寸		六角		螺纹		重量	型号	产品编码
D1	L1	L2	S1	S2	P1	P2	kg/100	Type	Product Code
6	42	49	22	17	M14x1.5	G1/4A	11.0	DG102/06SR	RU1270604
8	42	49	22	17	M16x1.5	G1/4A	11.6	DG102/08SR	RU1270804
12	52.5	60	30	24	M20x1.5	G3/8A	24.3	DG102/12SR	RU1271206
16	51.5	60	30	27	M24x1.5	G1/2A	25.6	DG102/16SR	RU1271608
20	65.5	76	41	36	M30x2	G3/4A	55.8	DG102/20SR	RU1272012
25	66	78	41	41	M36x2	G1A	85.3	DG102/25SR	RU1272516
30	75.5	89	60	46	M42x2	G1 1/4A	131.2	DG102/30SR	RU1273020
38	76	92	60	55	M52x2	G1 1/2A	149.4	DG102/38SR	RU1273824
6	42	49	22	17	M14x1.5	M14x1.5	11.2	DG102/06SM	RU1260614
8	42	49	22	17	M16x1.5	M14x1.5	11.3	DG102/08SM	RU1260814
12	52.5	60	30	24	M20x1.5	M18x1.5	24.5	DG102/12SM	RU1261218
16	51.5	60	30	27	M24x1.5	M22x1.5	25.9	DG102/16SM	RU1261622
20	65.5	76	41	36	M30x2	M27x2	55.8	DG102/20SM	RU1262027
25	66	78	41	41	M36x2	M33x2	63.7	DG102/25SM	RU1262533
30	75.5	89	60	46	M42x2	M42x2	131.6	DG102/30SM	RU1263042
38	76	92	60	55	M52x2	M48x2	149.1	DG102/38SM	RU1263848