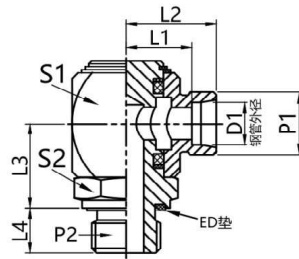


DGWES-M-ED

旋转式铰接式接头

Swivel articulated connector



- 符合ISO8434-1, 24°卡套连接作用
- 常规供货碳钢/表面镀锌, 不锈钢

- Comply with ISO8434-1, 24° ferrule connection
- Generally supplied carbon steel/galvanized surface, stainless steel

钢管外径		尺寸				六角		螺纹		重量	型号	产品编码
D1	L1	L2	L3	L4	S1	S2	P1	P2	kg/100	Type	Product Code	
6	16.5	23	21.5	8	27	17	M12x1.5	M10x1		DGWES06LMED	BF5160610	
6	16.5	23	22.5	12	27	19	M12x1.5	M12x1.5		DGWES06LM12X1.5ED	BF5160612	
8	16.5	23	22.5	12	27	19	M14x1.5	M12x1.5		DGWES08LMED	BF5160812	
8	18	25	25	12	30	22	M14x1.5	M14x1.5		DGWES08LM14X1.5ED	BF5160814	
10	19	26	25	12	30	22	M16x1.5	M14x1.5		DGWES10LMED	BF5161014	
10	20	27	27	12	32	24	M16x1.5	M16x1.5		DGWES10LM16X1.5ED	BF5161016	
12	20	27	27	12	32	24	M18x1.5	M16x1.5		DGWES12LMED	BF5161216	
12	22	29	30	12	36	27	M18x1.5	M18x1.5		DGWES12LM18X1.5ED	BF5161218	
15	23	30	30	12	36	27	M22x1.5	M18x1.5		DGWES15LMED	BF5161518	
18	24.5	32	33	14	40	32	M26x1.5	M22x1.5		DGWES18LMED	BF5161822	
22	29	36	35.5	16	45	36	M30x2	M26x1.5		DGWES22LMED	BF5162226	
28	34	41	41.5	18	55	41	M36x2	M33x2		DGWES28LMED	BF5163833	
35	38	48	51.5	20	65	50	M45x2	M42x2		DGWES35LMED	BF5163542	
42	42.5	53	56.5	22	75	55	M52x2	M48x2		DGWES42LMED	BF5164248	
6	18.5	25	22.5	12	27	19	M14x1.5	M12x1.5		DGWES06SMED	BF5260612	
8	18.5	25	22.5	12	27	19	M16x1.5	M14x1.5		DGWES08SMED	BF5260814	
10	19.5	27	25	12	30	22	M18x1.5	M16x1.5		DGWES10SMED	BF5261016	
12	20.5	28	27	12	32	24	M20x1.5	M18x1.5		DGWES12SMED	BF5261218	
14	24	32	30	14	36	27	M22x1.5	M20x1.5		DGWES14SMED	BF5261420	
16	25.5	34	33	14	40	32	M24x1.5	M22x1.5		DGWES16SMED	BF5261622	
20	28	38	35.5	16	45	36	M30x2	M27x2		DGWES20SMED	BF5262027	
25	33.5	45	41.5	18	55	41	M36x2	M33x2		DGWES25SMED	BF5262533	
30	39	52	51.5	20	65	50	M42x2	M42x2		DGWES30SMED	BF5263042	
38	43.5	59	56.5	22	75	55	M52x2	M48x2		DGWES38SMED	BF5263848	