

2J4

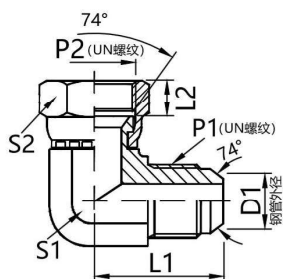
45°弯美制JIC外螺纹74°外锥 /JIC内螺纹74°内锥

45° bend, American JIC external thread, 74° external cone
/JIC internal thread, 74° internal cone

- 常规供货碳钢/表面镀锌, 不锈钢
- SAE J514/ISO 8434-2标准接头

- Commonly supplied carbon steel/galvanized surface, stainless steel
- SAE J514/ISO 8434-2 standard connector

钢管外径		尺寸		六角		螺纹		型号	产品编码
D1(mm)	D1(in)	L1	L2	S1	S2	P1	P2	Type	Product Code
6	1/4	21.5	9	11	15	7/16x20	7/16x20	2J4-04	JF7100404
8	5/16	22	9.5	14	17	1/2x20	1/2x20	2J4-05	JF7100505
10	3/8	22.8	10.5	14	19	9/16x18	9/16x18	2J4-06	JF7100606
12	1/2	26.8	11	19	24	3/4x16	3/4x16	2J4-08	JF7100808
14,15,16	5/8	31	13	22	27	7/8x14	7/8x14	2J4-10	JF7101010
18,20	3/4	35.5	15	27	32	1 1/16x12	1 1/16x12	2J4-12	JF7101212
22	7/8	37	15	30	36	1 3/16x12	1 3/16x12	2J4-14	JF7101414
25	1	38.5	16	33	41	1 5/16x12	1 5/16x12	2J4-16	JF7101616
30,32	1 1/4	43	17	41	50	1 5/8x12	1 5/8x12	2J4-20	JF7102020
35,38	1 1/2	49	20	48	55	1 7/8x12	1 7/8x12	2J4-24	JF7102424
50	2	58	24.5	63	75	2 1/2x12	2 1/2x12	2J4-32	JF7103232



2J9

90°弯美制JIC外螺纹74°外锥 /JIC内螺纹74°内锥

90° bend, American JIC external thread, 74° external cone
/JIC internal thread, 74° internal cone

- 常规供货碳钢/表面镀锌, 不锈钢
- SAE J514/ISO 8434-2标准接头

- Commonly supplied carbon steel/galvanized surface, stainless steel
- SAE J514/ISO 8434-2 standard connector

钢管外径		尺寸		六角		螺纹		型号	产品编码
D1(mm)	D1(in)	L1	L2	S1	S2	P1	P2	Type	Product Code
6	1/4	24.5	9	11	15	7/16x20	7/16x20	2J9-04	JF2100404
8	5/16	26.5	9.5	14	17	1/2x20	1/2x20	2J9-05	JF2100505
10	3/8	26.9	10.5	14	19	9/16x18	9/16x18	2J9-06	JF2100606
12	1/2	33	11	19	24	3/4x16	3/4x16	2J9-08	JF2100808
14,15,16	5/8	37.8	13	22	27	7/8x14	7/8x14	2J9-10	JF2101010
18,20	3/4	44.2	15	27	32	1 1/16x12	1 1/16x12	2J9-12	JF2101212
22	7/8	47.5	15	30	36	1 3/16x12	1 3/16x12	2J9-14	JF2101414
25	1	48.5	16	33	41	1 5/16x12	1 5/16x12	2J9-16	JF2101616
30,32	1 1/4	55.5	17	41	50	1 5/8x12	1 5/8x12	2J9-20	JF2102020
35,38	1 1/2	62.5	20	48	55	1 7/8x12	1 7/8x12	2J9-24	JF2102424
50	2	75.4	24.5	63	75	2 1/2x12	2 1/2x12	2J9-32	JF2103232