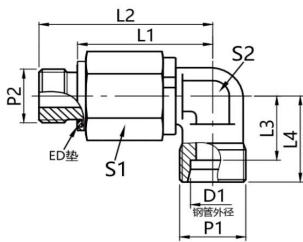


DG 103 弯通滚珠轴承旋转接头

Bent-through ball bearing swivel connector

- 符合ISO8434-1, 24°卡套连接作用
- 常规供货碳钢/表面镀锌, 不锈钢
- Comply with ISO8434-1, 24° ferrule connection
- Generally supplied carbon steel/galvanized surface, stainless steel

钢管外径		尺寸				六角		螺纹	重量	型号	产品编码
D1	L1	L2	L3	L4	S1	S2	P1	kg/100	Type	Product Code	
6	59	51.5	16	23	22	17	M14x1.5	13.4	DG103/06S	RU1350606	
8	59	51.5	17	24	22	17	M16x1.5	14.1	DG103/08S	RU1350808	
12	72	63	21.5	29	30	22	M20x1.5	29.6	DG103/12S	RU1351212	
16	73	63	24.5	33	30	22	M24x1.5	29.8	DG103/16S	RU1351616	
20	94.5	83	26.5	37	41	36	M30x2	77.2	DG103/20S	RU1352020	
25	95	83	30	42	41	36	M36x2	80.3	DG103/25S	RU1352525	
30	116	102.5	35.5	49	60	50	M42x2	172.2	DG103/30S	RU1353030	
38	117	102.5	41	57	60	50	M52x2	193.1	DG103/38S	RU1353838	



DG 104 弯通滚珠轴承旋转接头

Elbow ball bearing swivel connector

- 符合ISO8434-1, 24°卡套连接作用
- 常规供货碳钢/表面镀锌, 不锈钢
- 可提供氟橡胶密封圈
- Complies with ISO8434-1, 24° ferrule connection
- Commonly available carbon steel/galvanized surface, stainless steel
- Fluororubber sealing ring available

钢管外径		尺寸				六角		螺纹		重量	型号	产品编码
D1	L1	L2	L3	L4	S1	S2	P1	P2	kg/100	Type	Product Code	
6	39.5	51.5	16	23	22	17	M14x1.5	G1/4A	13.1	DG104/06SR	RU1470604	
8	39.5	51.5	17	24	22	17	M16x1.5	G1/4A	13.5	DG104/08SR	RU1470804	
12	51	63	21.5	29	30	22	M20x1.5	G3/8A	28.4	DG104/12SR	RU1471206	
16	49	63	24.5	33	30	22	M24x1.5	G1/2A	28.4	DG104/16SR	RU1471608	
20	67	83	26.5	37	41	36	M30x2	G3/4A	75.2	DG104/20SR	RU1472012	
25	65	83	30	42	41	36	M36x2	G1A	78.9	DG104/25SR	RU1472516	
30	82.5	102.5	35.5	49	60	50	M42x2	G1 1/4A	171.3	DG104/30SR	RU1473020	
38	80.5	102.5	41	57	60	50	M52x2	G1 1/2A	191.5	DG104/38SR	RU1473824	
6	39.5	51.5	16	23	22	17	M14x1.5	M14x1.5	13.2	DG104/06SM	RU1460614	
8	39.5	51.5	17	24	22	17	M16x1.5	M14x1.5	13.6	DG104/08SM	RU1460814	
12	51	63	21.5	29	30	22	M20x1.5	M18x1.5	28.6	DG104/12SM	RU1461218	
16	49	63	24.5	33	30	22	M24x1.5	M22x1.5	28.7	DG104/16SM	RU1461622	
20	67	83	26.5	37	41	36	M30x2	M27x2	75.2	DG104/20SM	RU1462027	
25	65	83	30	42	41	36	M36x2	M33x2	78.8	DG104/25SM	RU1462533	
30	82.5	102.5	35.5	49	60	50	M42x2	M42x2	171.7	DG104/30SM	RU1463042	
38	80.5	102.5	41	57	60	50	M52x2	M48x2	191.3	DG104/38SM	RU1463848	